



# Commercial Blinds

## Product Catalogue 2018



WE ARE BASED IN  
WOLLASTON, NORTANTS  
PLEASE VISIT OUR WEBSITE

[www.herdmanblinds.com](http://www.herdmanblinds.com)

For immediate contact call : Karen: 07828 244559

## Contents

Page 3 .....	Vertical & Venetian Blinds
Page 4.....	Roller & Roman Blinds
Page 5 .....	...Blackout & Cassette Blinds
Page 6.....	Pleated , Perfect Fit & Panel Blinds
Page 6 .....	Cap and Rack Blinds
Page 7 .....	Motorised Blind
Page 8.....	Oversized and difficult areas
Page 9.....	Awnings
Page 9.....	...Cubicle Tracks / Curtains
Page 10.....	Window Safety Film / Maintenance.
Page 11 .....	Specifications & Technical Support
Page 12 .....	Gallery & Case Studies

### Herdman Blinds

Herdman Blinds is the trading name of W M Herdman Manufacturing Co Ltd.  
We are a small independent Blind company and have been trading since 1960.

**We are HM Gov Approved and an NHS supplier.**

We pride ourselves on our excellent Customer Service and fair prices.

Always going the extra mile to build strong relationships with our customers and making sure the work is completed on time, every time.

### Contact Details

Telephone Nos :

General : (01933) 680416

Sales : **Gina** Mob: 07827 227231

Operations : **Chris** Mob: 07770 772283

Admin/ Accounts : **Karen** Mob: 07828 244559

Website : [www.herdmanblinds.com](http://www.herdmanblinds.com)

# Vertical Blinds

Our Vertical Blinds are manufactured and tested in our Northants Factory.

Popular office lighting solutions offering varying light gradients.

Huge choice of fabrics, colours and blackout options.

**WE NOW MANUFACTURE AND OFFER A TOTALLY CHAINLESS AND CORDLESS SYSTEM THAT IS EN13120 ANTI LIGATURE COMPLIANT.**

Ideal blinds for difficult areas. This system can also be motorised

**Dimensions– 400mm  
up to a massive  
4000mm wide**



Child Safe

EN13120  
compliant  
(Anti Ligature)

# Venetian Blinds

Venetian Blinds are smart, attractive and ideal for

office and office partitions.

Venetians come in a variety of finishes , wood ,eco wood and aluminium with a large variety of shades and colours.

Different size slats also available.

**25mm, 35mm,50mm.and 90mm**

Available in motorised format.



Child Safe

EN13120  
compliant  
(Anti Ligature)

[www.herdmanblinds.com](http://www.herdmanblinds.com)

# Roller Blinds

Huge choice of fabrics and finishes

Very popular choice in Schools and Offices.

Manufactured in our Northants Factory.

The Herdman LL Roller System being our biggest seller and contains 100% UK supplied components.

\*Ideal for larger windows

\*Blackout and Cassette Options

\*EN13120 compliant (anti-ligature)

\*Screen vision, anti—microbial, solar and heat efficient fabrics available.

\*Motorised, crank rod or stainless steel ball chain control options available.

**Dimensions 600mm up to 4000mm wide**



# Roman Blinds

Made to measure locally and hand made.

Offers warmth and a homely feel to public areas.

Ideal for hotels and conference rooms

Large choice of fabric and colours.



Motorised option available.

Fabric swatches and binders available.

**Various widths and Lengths**



# Blackout & Cassette Blinds

Offering blackout environment for conference rooms and spaces requiring privacy and light closure

Made in our Northants Factory.

Full cassette Blackout Blinds using quality powder coated

aluminium fascia and side channels to ensure suitable blackout is achieved.

Very stylish and neat and a must for those Science rooms and Drama studios.

Blackout fabrics are available in a range of colours.

**Dimensions 600mm up to 3000mm wide**



\*Powder coated Aluminium fascia

\*Large coverage can be achieved

\*Available in Motorised format.

\*Curved and Square headbox options available in two sizes



Child Safe



EN13120  
compliant  
(Anti Ligature)



## Pleated, Perfect Fit & Panel Blinds

Pleated and honeycomb style blinds.

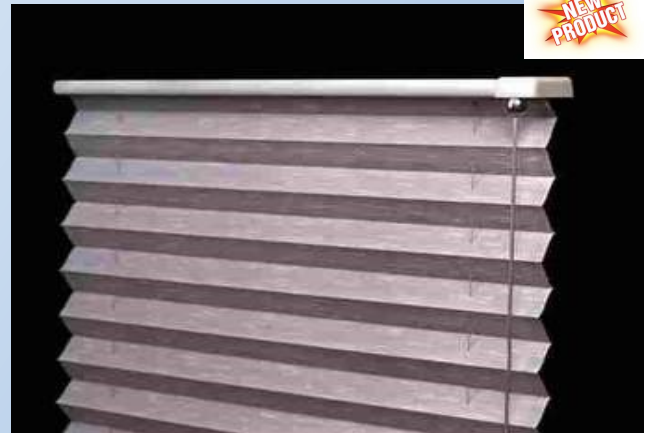
Now available in a simple chainless up/down.

Lift control via the bottom rail.

EN13120 compliant with no loose cords/chains.

Good choice for skylights

Available in Motorised format



Dimensions up to 1500mm wide



## Perfect Fit

Can be used and fixed discreetly

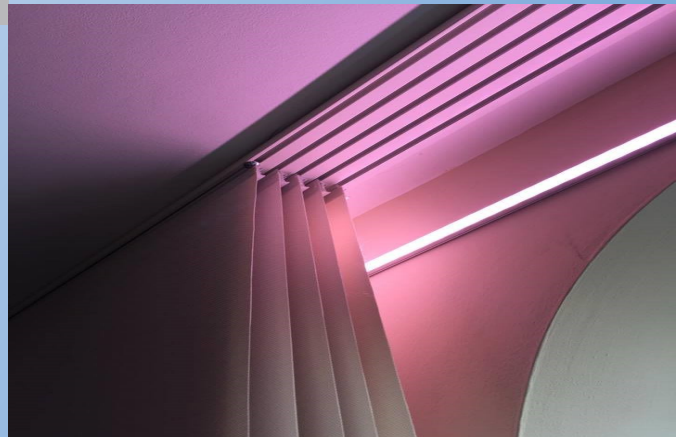
on to glazed doors

Dimensions 250mm to 1000mm wide

## Panel Blinds

A different and stylish option for covering wide reveals or patio sliding door areas.

Dimensions up to 20sq mtrs



## Cap and Rack Blinds

Herdman Blinds is one of a few companies who understand a true cap and rack blind system.

Still used at many Heritage Sites

WE STILL MAINTAIN THIS TYPE OF BLIND  
IN THE PARLIAMENT BUILDINGS TODAY



# Motorised Blinds



Motorised Blinds are convenient and easy to use.

Ideal for areas requiring multiple blinds, high level glazing and difficult areas to access control.

Suited to offices, conference rooms, retail outlets and public areas.

Easy maintenance and use for end users.

Large range of motorisation and full advice on electrical requirements

**Dimensions from 600mm up to 4000mm wide**



We only use the best components to go with our blinds.

Somfy is a brand leader, tried and trusted in the UK blind industry.

Power requirements are far simpler than is believed, particularly when using the wide range of wireless products now available

today.



## Oversized and Difficult Areas



We never get phased here at Herdman Blinds because we know that usually there will always be a solution.

This is an image of an external motorised blind with a huge 26 sq mtrs of fabric, some 8 mtrs high. The blind needed to be built off a podium tower and is

operated off a simple wireless hand held remote control. If you are specifying or know of any tricky areas that may need some professional advice then please ring us.



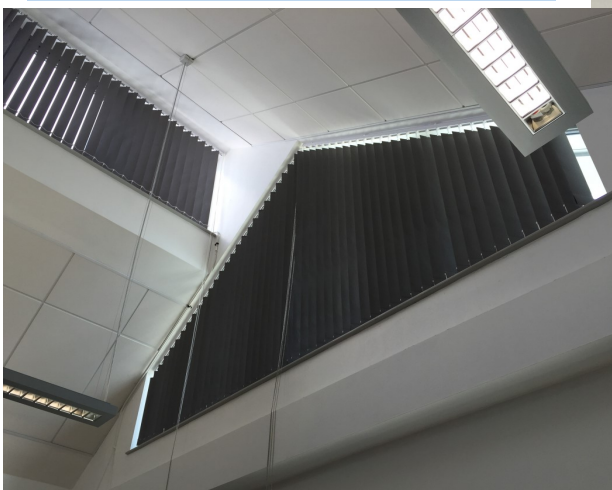
### Blinds between Glazing

Secondary glazing can still be an issue but again there will always be a solution that we can recommend.

This is a venetian blind inside secondary glazing that can be tilted and raised via a control system fed through to the front frame.



Child Safe  
EN13120  
compliant  
(Anti Ligature)



### TRAPEZOID OR IRREGULAR SHAPED WINDOWS

Yes, the architects' love strange and wonderful shaped windows— but then the fun often begins when the thoughts turn towards how the glare is going to be prevented? Problems are for solving!



## Awnings

Being external, these often require specialised fixing using chemical fixings. These are not for your basic installation teams to fit. At Herdman, we have years of experience and can confidently quote you for a full measure, supply and installation service.



## Cubicle Tracks

We welcome any enquiries from Hospitals or Medical Practices. We use the respectable Goelst brand for the tracks and 100% compliant and approved associated curtains or blind fabrics.

Herdman Blinds is a  
NHS supplier and registered

[www.herdmanblinds.com](http://www.herdmanblinds.com)

## Curtains

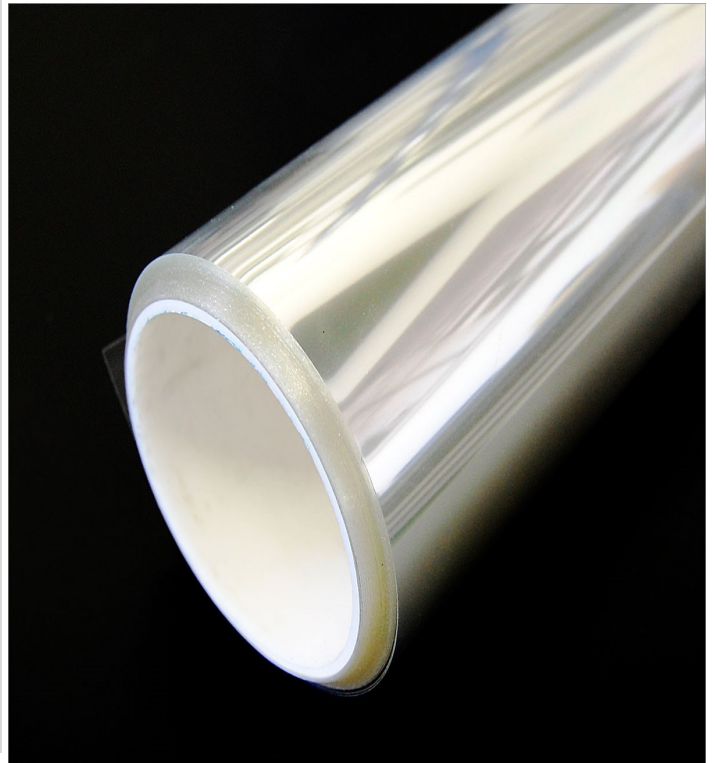
We have years of experience of advising and installing curtains, valances, voiles, swags and tie backs.

Often working with direct suppliers such as Panaz, we can always offer up viable solutions from a large fabric range, using the right products and at good competitive prices.



## Window Safety Film

On the rare occasions where a blind is not the solution, Herdman Blinds can offer and install all types of window film including obscure, etched, polarised dim-out and blackout.



Alamy BCK3YM

## Maintenance

Blinds can often have a limited life, particularly when they are in an environment where perhaps the end users are not so careful.

A damaged blind should not however always mean a new one is required.

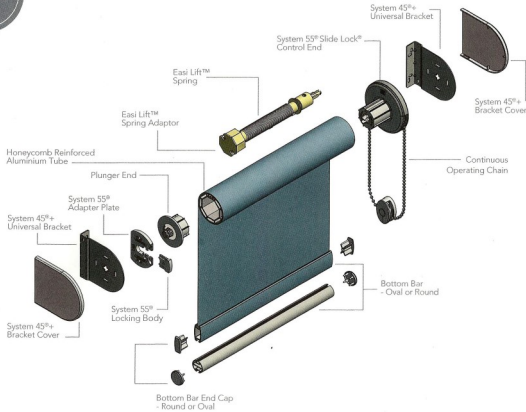
We have many components from various suppliers that can help us minimize our charges to you, by repairing and not replacing. If it is viable and worth doing then we will advise accordingly.

**Specifications & Technical Support**

**We can provide you with technical details on nearly all our products. We also provide O & M manuals when requested**



**ROLLER SYSTEM 55® EASI LIFT**  
operating larger blinds with ease



Designed specifically to meet the needs of the increasing number of buildings with larger windows, the new Roller System 55® Easi Lift™ makes light work of raising and lowering larger roller blinds.

The smooth spring assisted operation working in combination with the reinforced 55mm honeycomb tube creates a heavy duty system that will deliver robust and reliable manually operated blinds.

The system also features a new locking plate that secures the blind firmly into the brackets during installation.

System 55mm Easi Lift™ is designed and manufactured in the UK using only the highest grade materials and all components are 10 years life cycle tested to ensure reliability in use.

- A cost effective method to operate very large roller blinds
- Operates larger blinds up to 4m wide x 4.5m drop, maximum holding weight 24lbs (11kgs)
- Spring Assist is recommended for use on all blinds over 10lbs (4.5kgs) to give optimum performance
- Blind locks securely into place for extra safety in domestic and commercial installations
- Honeycomb tube structure for extra strength and reduces tube deflection

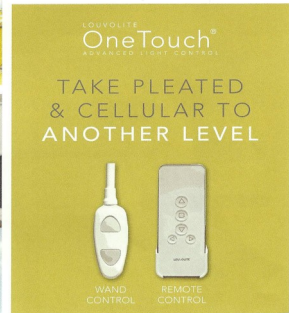
Call Steve on 07540 800256 or our support team on 01933-640816



**contemporary style**  
PLEATED & CELLULAR BLINDS LIFT SYSTEM



- Stunning looking large pleated and cellular blinds with easy to operate manual or motorised handling options.
- Spool guides assist with the smooth lift capability and stack the fabric neatly under the stylish cassette.
- 60mm headrail with curved front profile for improved aesthetics.
- Motorised options raise and lower blinds at the touch of a button - simple, convenient and easy to install and use.
- Motorised blinds are totally child safe with no loose cords.
- Available now from Louvolite as components and fabric or as a finished blind.



Call Steve on 07540 800256 or our support team on 01933-640816



**HERDMAN BLINDS**

**Slimline® Bracket Dimensions**



**Louvolite Slimline® vertical blind system**

**Hardware specification**

Vertical Blinds should be manufactured using the Louvolite Slimline® System with aluminium headrail 28mm x 28mm and include Louvolite carrier trucks with UV resistant and slipping end blocks. The operating chain should be the 3 size metal to ensure optimal performance. The brackets used for the vertical louvre will be coated and painted to match a Louvolite UV stabilised hanger - also with a hole - can be added or welded into the top of the frame.

**General applications**

Vertical blinds incorporating the Slimline® headrail system provides a contemporary and extremely practical commercial installation and are available from approved manufacturers worldwide. It is suitable for use in high traffic areas and is designed to ensure long life. The system is easy to install and provides an extremely efficient method of light control. It is also an ideal choice for projects large or small. UV stabilised louvre hangers are manufactured using Nylon No. 6 plastic.

**Headrail**

The Slimline® aluminium headrail extrusion is made from prime aluminium and is available in white and brown powder coated or silver anodised, which makes it corrosion resistant.

**Carrier Trucks**

To ensure a precise and smooth operation within the headrail, all carriers are manufactured using prime quality plastic materials. This also provides durability and protection from environmental and UV rays. The gears in the carrier trucks that rotate the louvre are self-aligning with limit stops. This allows louvre rotation to 180°, which ensures an efficient closure without strain on the mechanism.

**Operation**

Operation is by either No. 6 size chain or a lift and draw wand control. Slimline® trucks are smooth running and robust. The components are made in aluminium, prime plastic or stainless steel. This also provides durability and protection from environmental and UV rays.

**Maintenance**

All of the Slimline® components are manufactured using aluminium, plastic or stainless steel. They do not present any corrosion problems in normal environments. The system has been designed for a smooth operation, together with a rigidity to prevent the window blind's working life. However any damage which does occur can normally be rectified on site.

**LOUVRES**

Available as 28mm or 32.7mm width. All louvres are weighted and interlinked, front and back with ball and 'C' clip connectors.

Your Slimline® Distributor:

ARCHITECTS  
SPECIFIERS  
CONTRACTORS

HERDMAN BLINDS

LOUVOLITE

MADE IN GREAT BRITAIN

01933 640816



[www.herdmanblinds.com](http://www.herdmanblinds.com)

Tel Nos:

General Enquiries: **(01933) 680416**

Sales: **Gina 07827 227231**

Operations : **Chris 07770 772283**

Admin/ Finance: **Karen 07828 244559**



<https://twitter.com/herdmanblinds>



<https://linkedin.com/in/herdmanblinds>



<https://facebook.com/herdmanblinds>

Child Safe



EN13120  
compliant  
(Anti Ligature)



# Herdmans was here!



Let us quote for your projects.!

Competitive pricing always.

Call Gina: 07827 227231

Email: [gina@herdmanblinds.com](mailto:gina@herdmanblinds.com)



# Case Study 1



## Project Value £5000

It is not often we get to do oversized blinds but at Herdmans we do have the facilities to do bespoke extra large blinds.

Chris built the tower and away the fitters went and a lovely countryside outlook too and the sun shone down on the guys as well.

The blind went up with no problems given the sheer weight was enough to make your eyes water.

We use the best of british components on this unique install and without a doubt they were needed and worked perfectly.

## Size Matters!

When we received the phone call to say could we help we jumped at the chance to produce a bespoke outdoor blind for a unique outdoor opera house.

This involved around 5m<sup>2</sup> of 1% screen fabric welded on a 90mm tube using a Somfy centralis with RTS converter at a height of around 8m.

As the blind was to be outside we needed an extra heavy bottom rail and stainless steel side guides to ensure the blind would stay in place



# Case Study 2



## Coffee please!

We are becoming experts in these coffee concession installs.

We have done a number of these and although they can present their own problems they are really quite enjoyable.

RTS motorised blinds at a height from 3m to a whopping 12m being the highest one we have done.

Best of British components used with screen vision fabric at 3% and Somfy motorisation.

**Project Value £5,000—£15,000**

These blinds are our very own Genesis Blind Systems. We always work with the electricians to ensure a flawless install and I am proud to say that Herdmans are now getting this down to a fine art. We usually install in a day and occasionally it runs into 2 days. We always look forward to the NEXT one !



# Case Study 3



## Curtain Call!

**Hotel refurbishment in the South West**

**We were tasked to work with the fit out company to deliver top quality , hand finished FR curtains to coincide with the rooms being re let the same day.**

**The rooms were on a week turn about so to secure this would happen we set up a system to ensure we worked closely with the Site Manager, the curtain makers and our diary.**

**We also bough the fabric quantities up front to ensure there was no issues with stock levels.**

**Project Value: £50,000**

**Never under estimate a quality curtain fitter and luckily Chris has 30 years experience.**

**Fitting hand finished lined, pencil pleat curtains, tie backs and shears.**

**This was a real success with no problems which shows if you put a plan in place, talk to each other the project can run smoothly.**

**We do pride ourselves with good customer communication and at times it proves invaluable.**





# Case Study 4



## That's Odd!

**Architects love strange shapes and we quite like the challenge too.**

**We have a very special machine which works out the mats for us and we can install vertical blinds to accommodate these wonders.**

**We had 4 rooms in total to make trapezoid verticals .**

**All at high level !**

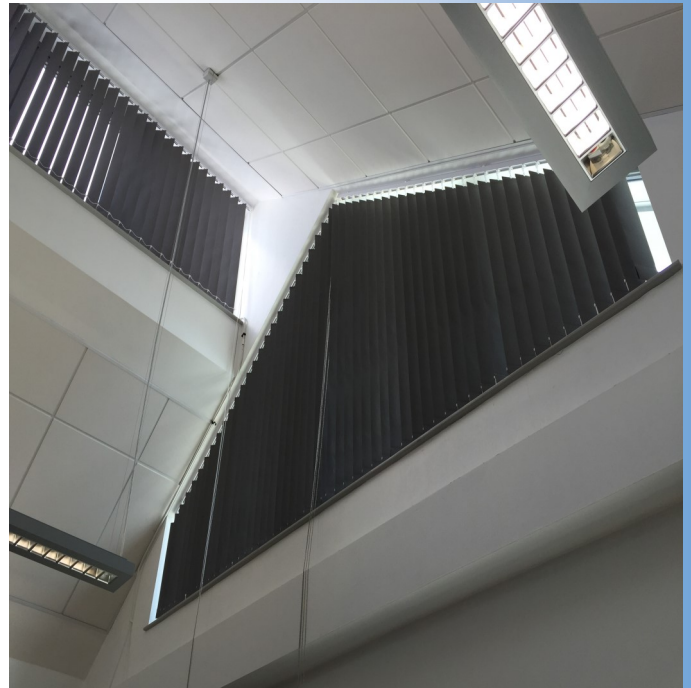
**Project Value: £12,000**

**Very clever system used here.**

**With the trucks set perfectly and equal distancing the louvres look quite spectacular.**

**The best part about this install is we return each year to maintain the 1000 plus blinds in this Academy and it is great to see how well they have lasted.**

**Installed 4 years ago and occasionally need to straighten a louvre due to the window being opened but they hold up against standard verticals.**





*A  
Blind Company  
You Can  
Trust!*

[www.herdmanblinds.com](http://www.herdmanblinds.com)